



KENTUCKY

SUMMARY

- Kentucky is in the orange zone for cases, indicating between 51 and 100 new cases per 100,000 population last week, with the 19th highest rate in the country. Kentucky is in the yellow zone for test positivity, indicating a rate between 5.0% and 7.9%, with the 14th highest rate in the country.
- Kentucky has seen stability in new cases and a decrease in test positivity over the last week.
- The following three counties had the highest number of new cases over the last 3 weeks: 1. Jefferson County, 2. Fayette County, and 3. Warren County. These counties represent 37.2% of new cases in Kentucky.
- 56% of all counties in Kentucky have moderate or high levels of community transmission (yellow, orange, or red zones), with 14% having high levels of community transmission (red zone).
- During the week of Sep 7 - Sep 13, 10% of nursing homes had at least one new resident COVID-19 case, 21% had at least one new staff COVID-19 case, and 5% had at least one new resident COVID-19 death.
- Kentucky had 99 new cases per 100,000 population in the last week, compared to a national average of 86 per 100,000.
- Current staff deployed from the federal government as assets to support the state response are: 1 to support operations activities from FEMA.
- Between Sep 12 - Sep 18, on average, 179 patients with confirmed COVID-19 and 456 patients with suspected COVID-19 were reported as newly admitted each day to hospitals in Kentucky. An average of greater than 95% of hospitals reported either new confirmed or new suspected COVID patients each day during this period.

RECOMMENDATIONS

- Applaud Governor's leadership in mitigation efforts; however, there is a need to strengthen compliance.
- Maintain community testing at July levels in order to effectively identify cases and rapidly intervene as transmission patterns continue to change.
- Continue to conduct rigorous case investigation and rapid contact tracing with early isolation of known or suspected cases and quarantine of all contacts. Maintain a particular focus in cities or counties with elevated or increasing transmission and tourist areas. Use results from contact tracing to message to community about current transmission trends and how citizens can protect themselves.
- Track antigen positive results with PCR confirmed results to determine totality of community spread in local areas.
- In areas with ongoing high levels of transmission (red and orange zones), use standard metrics to determine school learning options and capacity for bars and indoor dining. Expand outdoor dining options.
- Dramatically increase testing at universities to quickly find and quarantine on-campus cases and prevent spread in surrounding community. Use positive incentives to encourage testing among students. Implement wastewater surveillance in order to identify and respond to changes in transmission levels. Do not reassign cases that test positive in university settings to hometown as this lessens ability to track and control local spread. Implement wastewater surveillance in order to identify and respond to changes in transmission levels.
- Ensure the protection of those in nursing homes, assisted living, and long-term care facilities (LTCFs) by ensuring access to rapid facility-wide testing in response to a resident or staff member with COVID-19; isolate all positive staff and residents. Ensure social distancing and universal facemask use. Immediately conduct infection control surveys in all nursing homes with initial cases or 3 or more cases in the last week. Antigen testing supplies will continue to be provided by the federal government over the next 4-6 weeks to support LTCF testing.
- Specific, detailed guidance on community mitigation measures can be found on the [CDC website](#).

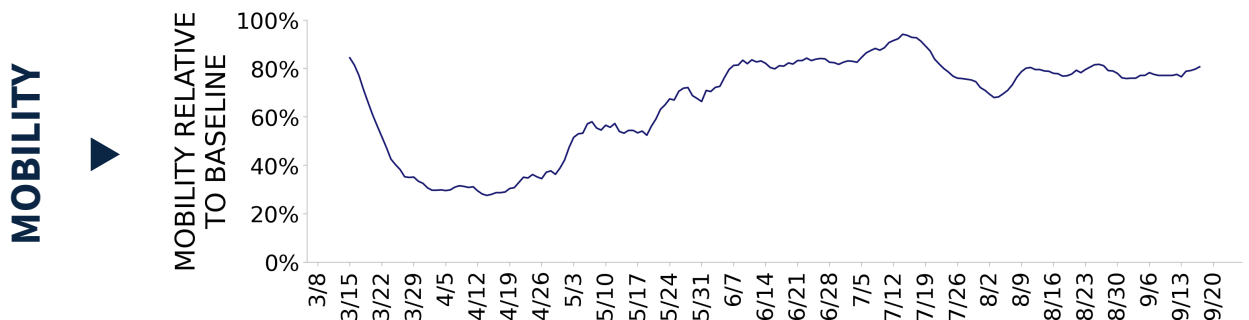




KENTUCKY

STATE REPORT | 09.20.2020

	STATE, LAST WEEK	STATE, % CHANGE FROM PREVIOUS WEEK	FEMA/HHS REGION, LAST WEEK	UNITED STATES, LAST WEEK
NEW COVID-19 CASES (RATE PER 100,000)	4,430 (99)	+10%	71,681 (107)	283,590 (86)
VIRAL (RT-PCR) LAB TEST POSITIVITY RATE	7.5%	-0.9%*	6.1%	4.4%
TOTAL VIRAL (RT-PCR) LAB TESTS (TESTS PER 100,000)	61,529** (1,377)	+18%**	1,067,059** (1,595)	5,881,734** (1,792)
COVID-19 DEATHS (RATE PER 100,000)	57 (1.3)	+0%	1,809 (2.7)	5,580 (1.7)
SNFs WITH ≥1 NEW RESIDENT COVID-19 CASE (≥1 NEW STAFF CASE)	10% (21%)	+0%* (+0%*)	17% (30%)	9% (19%)
SNFs WITH ≥1 NEW RESIDENT COVID-19 DEATH	5%	-1%*	7%	4%



* Indicates absolute change in percentage points.

** Due to delayed reporting, this figure may underestimate total diagnostic tests and week-on-week changes in diagnostic tests.

DATA SOURCES – Additional data details available under METHODS**Note:** Some dates may have incomplete data due to delays in reporting. Data may be backfilled over time, resulting in week-to-week changes.**Cases and Deaths:** State values are calculated by aggregating county-level data from USAFacts; therefore, the values may not match those reported directly by the state. Data is through 9/18/2020; last week is 9/12 - 9/18, previous week is 9/5 - 9/11.**Testing:** CELR (COVID-19 Electronic Lab Reporting) state health department-reported data through 9/16/2020. Last week is 9/10 - 9/16, previous week is 9/3 - 9/9.**Mobility:** Descartes Labs. This data depicts the median distance moved across a collection of mobile devices to estimate the level of human mobility within a county. The 100% represents the baseline mobility level prior to the pandemic; lower percent mobility indicates less population movement. Data is anonymized and provided at the county level. Data through 9/18/2020.**SNFs:** Skilled nursing facilities. National Healthcare Safety Network. Data are reported separately for cases among residents and staff. Last week is 9/7-9/13, previous week is 8/31-9/6.



KENTUCKY

STATE REPORT | 09.20.2020

COVID-19 COUNTY AND METRO ALERTS*

Top 12 shown in table (full lists below)

	METRO AREA (CBSA) LAST WEEK	COUNTY LAST WEEK
LOCALITIES IN RED ZONE	4 Bowling Green Elizabethtown-Fort Knox Campbellsville Glasgow	17 Warren Christian Barren Logan Jackson Grayson Green Taylor Trigg Monroe Estill Russell
LOCALITIES IN ORANGE ZONE	5 Richmond-Berea Owensboro Murray Middlesborough Mayfield	20 Jefferson Daviess Hardin Oldham Laurel Bullitt Union Shelby Calloway Bell Marshall Graves
LOCALITIES IN YELLOW ZONE	12 Louisville/Jefferson County Lexington-Fayette London Clarksville Paducah Somerset Evansville Frankfort Bardstown Madisonville Mount Sterling Central City	30 Fayette Madison Kenton Pulaski Boone Henderson McCracken Greenup Scott Nelson Campbell Franklin

All Red Counties: Warren, Christian, Barren, Logan, Jackson, Grayson, Green, Taylor, Trigg, Monroe, Estill, Russell, Clay, Caldwell, Meade, Allen, Letcher

All Orange Counties: Jefferson, Daviess, Hardin, Oldham, Laurel, Bullitt, Union, Shelby, Calloway, Bell, Marshall, Graves, Crittenden, Lewis, Bourbon, Wayne, Lyon, Larue, Pendleton, Edmonson

All Yellow Counties: Fayette, Madison, Kenton, Pulaski, Boone, Henderson, McCracken, Scott, Greenup, Nelson, Campbell, Franklin, Jessamine, Hopkins, Harlan, Mercer, Muhlenberg, Simpson, McCreary, Rowan, Montgomery, Woodford, Perry, Lincoln, Knott, Adair, Breckinridge, Breathitt, Bath, Metcalfe

* Localities with fewer than 10 cases last week have been excluded from these alerts.

Note: Lists of red, orange, and yellow localities are sorted by the number of new cases in the last 3 weeks, from highest to lowest. Some dates may have incomplete data due to delays in reporting. Data may be backfilled over time, resulting in week-to-week changes.

DATA SOURCES - Additional data details available under METHODS

Cases and Deaths: State values are calculated by aggregating county-level data from USAFacts; therefore, the values may not match those reported directly by the state. Data is through 9/18/2020; last week is 9/12 - 9/18, three weeks is 8/29 - 9/18.

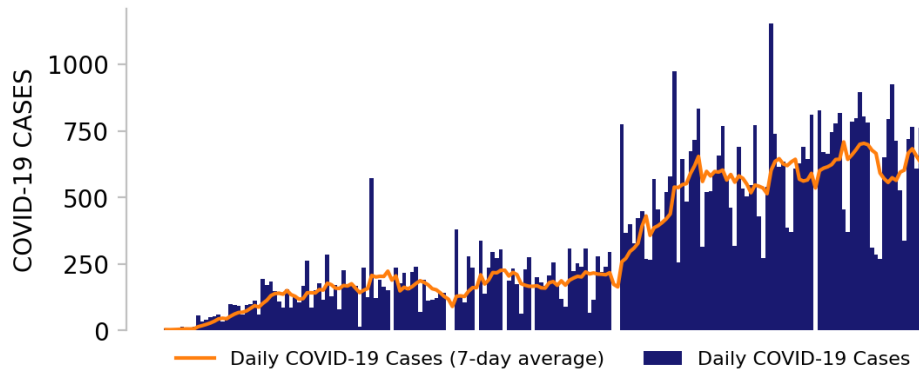
Testing: CELR (COVID-19 Electronic Lab Reporting) state health department-reported data through 9/16/2020. Last week is 9/10 - 9/16.



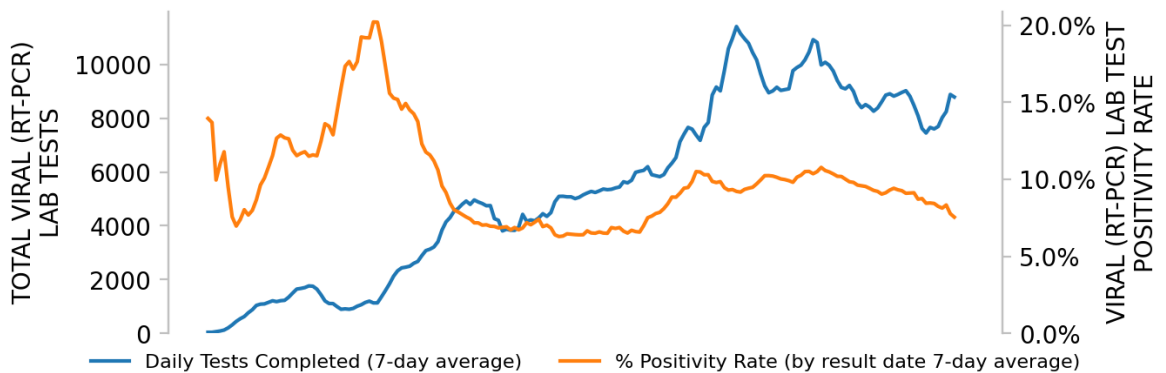
KENTUCKY

STATE REPORT | 09.20.2020

NEW CASES

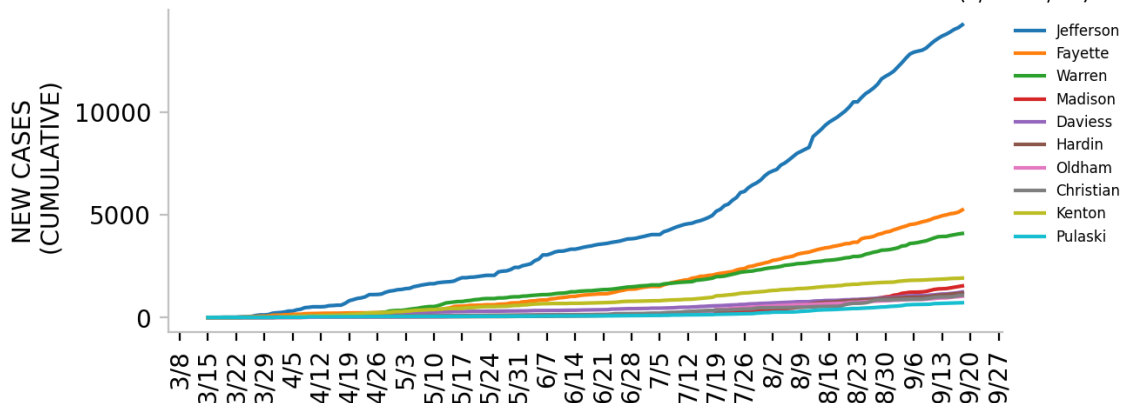


TESTING



Top counties based on greatest number of new cases in last three weeks (8/29 - 9/18)

TOP COUNTIES



DATA SOURCES – Additional data details available under METHODS

Note: Some dates may have incomplete data due to delays in reporting. Data may be backfilled over time, resulting in week-to-week changes.

Cases: State values are calculated by aggregating county-level data from USAFacts; therefore, the values may not match those reported directly by the state. Data is through 9/18/2020.

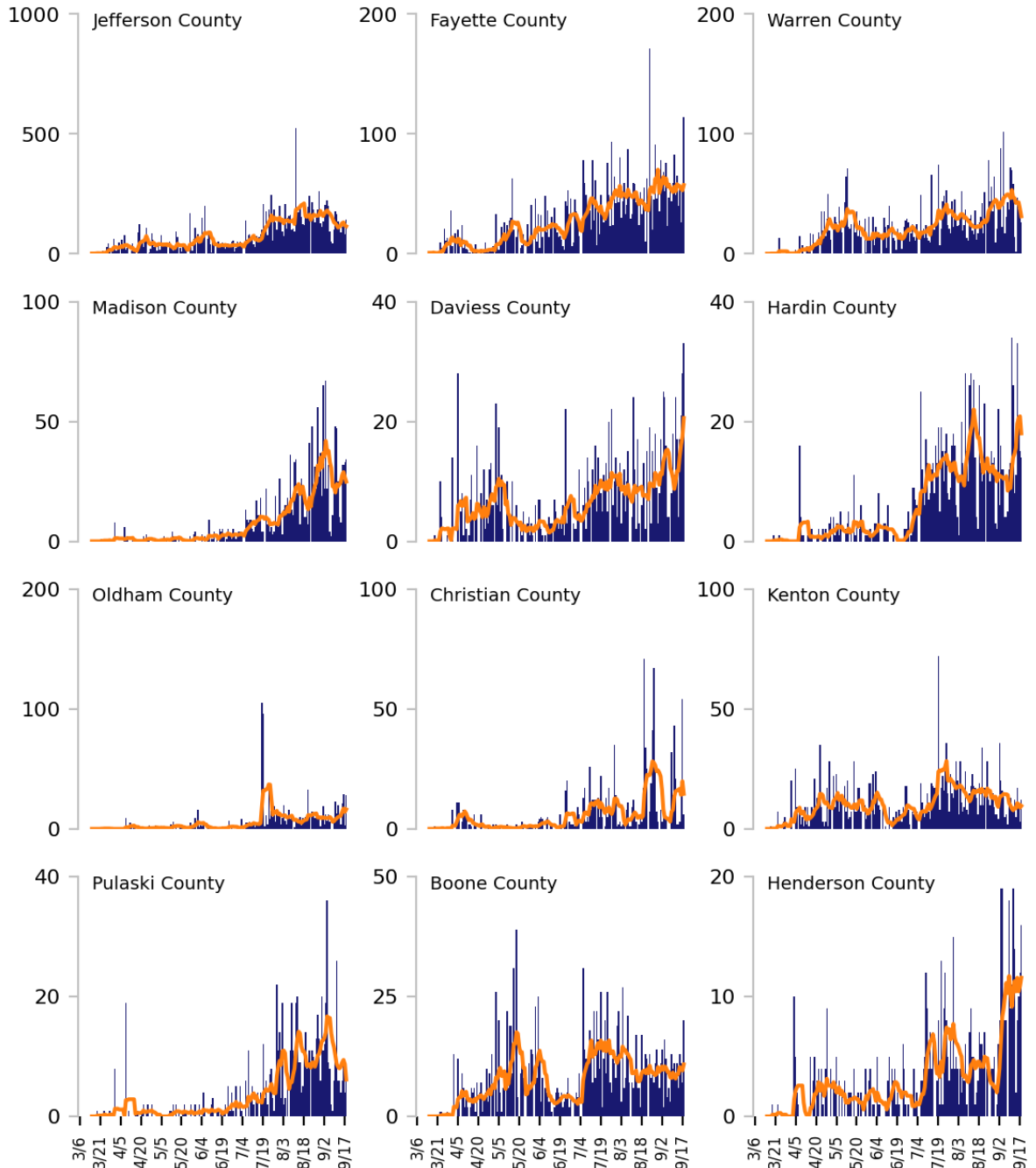
Testing: CELR (COVID-19 Electronic Lab Reporting) state health department-reported data through 9/16/2020.



Top 12 counties based on number of new cases in the last 3 weeks

— Daily COVID-19 Cases (7-day average) ■ Daily COVID-19 Cases

TOTAL DAILY CASES



DATA SOURCES – Additional data details available under METHODS

Cases: State values are calculated by aggregating county-level data from USAFacts; therefore, the values may not match those reported directly by the state. Data is through 9/18/2020. Last 3 weeks is 8/29 - 9/18.

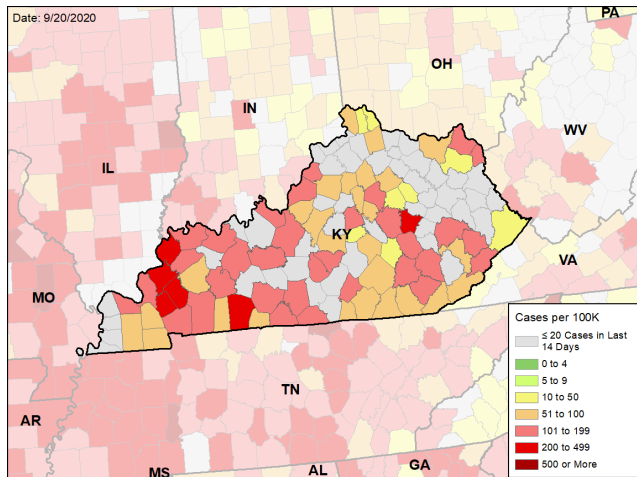


KENTUCKY

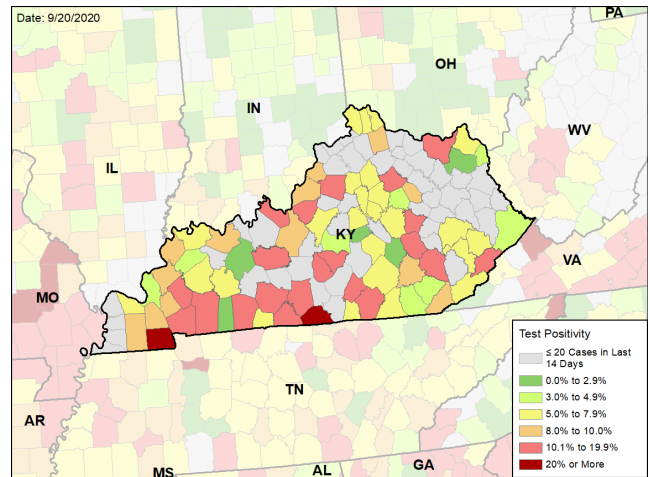
STATE REPORT | 09.20.2020

CASE RATES AND VIRAL LAB TEST POSITIVITY DURING THE LAST WEEK

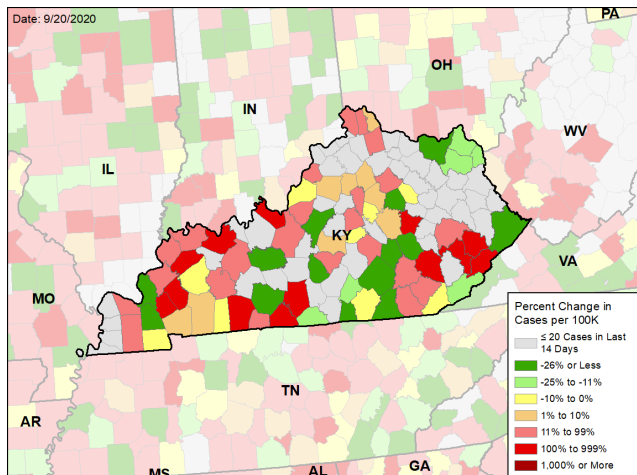
NEW CASES PER 100,000 DURING THE LAST WEEK



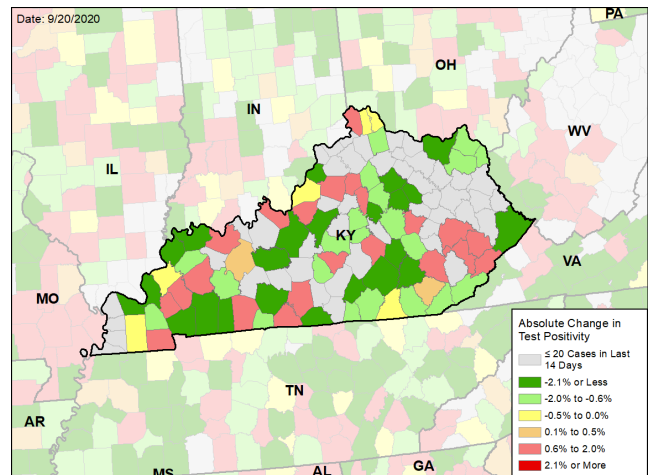
VIRAL (RT-PCR) LABORATORY TEST POSITIVITY DURING THE LAST WEEK



WEEKLY CHANGE IN NEW CASES PER 100,000



WEEKLY CHANGE IN VIRAL (RT-PCR) LABORATORY TEST POSITIVITY



DATA SOURCES – Additional data details available under METHODS

Note: Some dates may have incomplete data due to delays in reporting. Data may be backfilled over time, resulting in week-to-week changes.

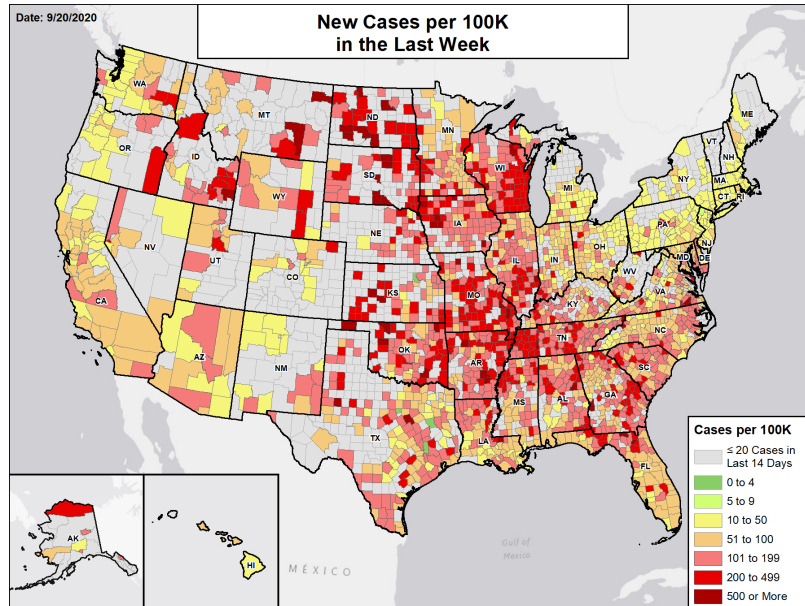
Cases: State values are calculated by aggregating county-level data from USAFacts; therefore, the values may not match those reported directly by the state. Data is through 9/18/2020. Last week is 9/12 - 9/18, previous week is 9/5 - 9/11.

Testing: CELR (COVID-19 Electronic Lab Reporting) state health department-reported data through 9/16/2020. Last week is 9/10 - 9/16, previous week is 9/3 - 9/9.

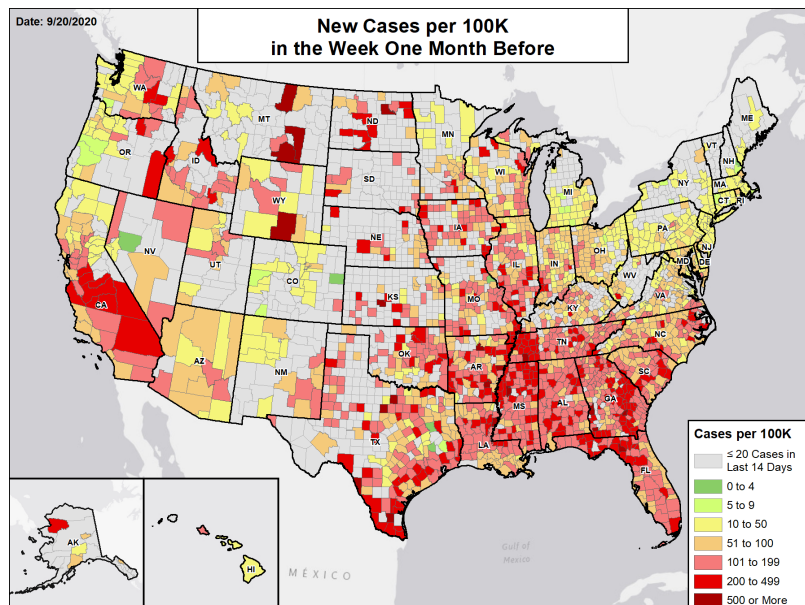


National Picture

NEW CASES PER 100,000 LAST WEEK



NEW CASES PER 100,000 IN THE WEEK ONE MONTH BEFORE



DATA SOURCES

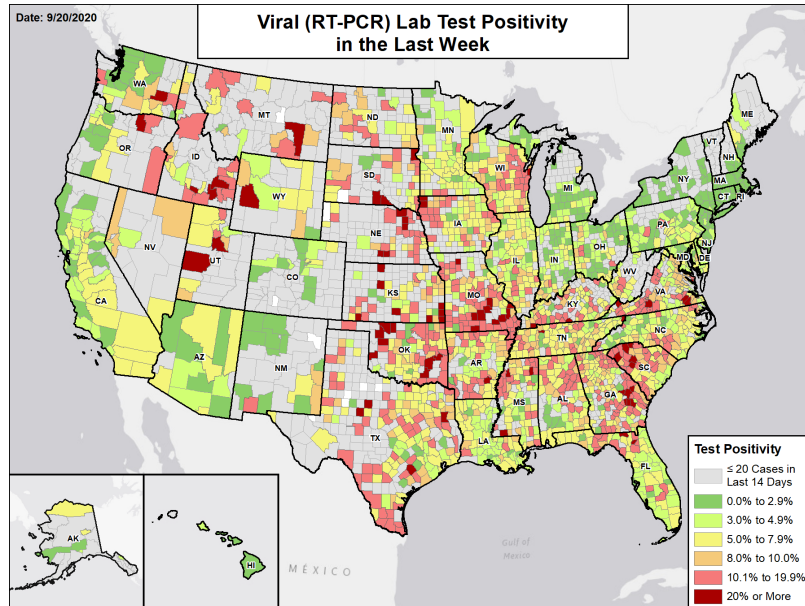
Note: Some dates may have incomplete data due to delays in reporting. Data may be backfilled over time, resulting in week-to-week changes.

Cases: County-level data from USAFacts through 9/18/2020. Last week is 9/12 - 9/18; the week one month before is 8/15 - 8/21.

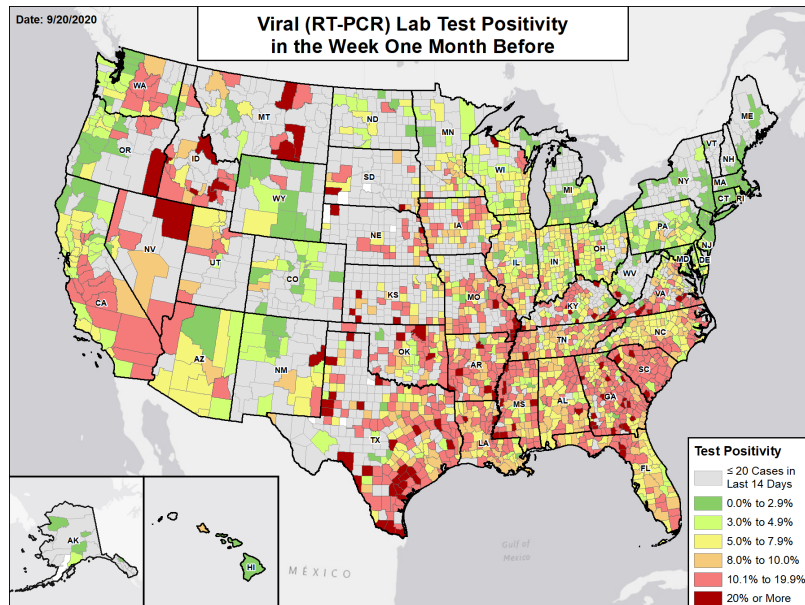


National Picture

VIRAL (RT-PCR) LAB TEST POSITIVITY LAST WEEK



VIRAL (RT-PCR) LAB TEST POSITIVITY IN THE WEEK ONE MONTH BEFORE



DATA SOURCES

Note: Some dates may have incomplete data due to delays in reporting. Data may be backfilled over time, resulting in week-to-week changes.

Testing: Combination of CELR (COVID-19 Electronic Lab Reporting) state health department-reported data and HHS Protect laboratory data (provided directly to Federal Government from public health labs, hospital labs, and commercial labs) through 9/16/2020. Last week is 9/10 - 9/16; the week one month before is 8/13 - 8/19.



METHODS

STATE REPORT | 09.20.2020

COLOR THRESHOLDS: Results for each indicator should be taken in context of the findings for related indicators (e.g., changes in case incidence and testing volume). Values are rounded before color classification.

Metric	Dark Green	Light Green	Yellow	Orange	Red
New cases per 100,000 population per week	≤4	5 – 9	10 – 50	51 – 100	≥101
Percent change in new cases per 100,000 population	≤-26%	-25% – -11%	-10% – 0%	1% – 10%	≥11%
Diagnostic test result positivity rate	≤2.9%	3.0% – 4.9%	5.0% – 7.9%	8.0% – 10.0%	≥10.1%
Change in test positivity	≤-2.1%	-2.0% – -0.6%	-0.5% – 0.0%	0.1% – 0.5%	≥0.6%
Total diagnostic tests resulted per 100,000 population per week	≥2001	1001 – 2000	750 – 1000	500 – 749	≤499
Percent change in tests per 100,000 population	≥26%	11% – 25%	1% – 10%	-10% – 0%	≤-11%
COVID-19 deaths per 100,000 population per week	≤0.1	0.2 – 0.4	0.5 – 1.0	1.1 – 2.0	≥2.1
Percent change in deaths per 100,000 population	≤-26%	-25% – -11%	-10% – 0%	1% – 10%	≥11%
Skilled Nursing Facilities with at least one resident COVID-19 case, death	0%		1% – 5%		≥6%
Change in SNFs with at least one resident COVID-19 case, death	≤-2%		-1% – 1%		≥2%

DATA NOTES

- Some dates may have incomplete data due to delays in reporting. Data may be backfilled over time, resulting in week-to-week changes. It is critical that states provide as up-to-date data as possible.
- Cases and deaths:** County-level data from USAFacts as of 16:14 EDT on 09/20/2020. State values are calculated by aggregating county-level data from USAFacts; therefore, values may not match those reported directly by the state. Data are reviewed on a daily basis against internal and verified external sources and, if needed, adjusted. Last week data are from 9/12 to 9/18; previous week data are from 9/5 to 9/11; the week one month before data are from 8/15 to 8/21.
- Testing:** The data presented represent viral COVID-19 laboratory diagnostic and screening test (reverse transcription polymerase chain reaction, RT-PCR) results—not individual people—and exclude antibody and antigen tests, unless stated otherwise. CELR (COVID-19 Electronic Lab Reporting) state health department-reported data are used to describe county-level viral COVID-19 laboratory test (RT-PCR) result totals when information is available on patients' county of residence or healthcare providers' practice location. HHS Protect laboratory data (provided directly to Federal Government from public health labs, hospital labs, and commercial labs) are used otherwise. Some states did not report on certain days, which may affect the total number of tests resulted and positivity rate values. Because the data are deidentified, total viral (RT-PCR) laboratory tests are the number of tests performed, not the number of individuals tested. Viral (RT-PCR) laboratory test positivity rate is the number of positive tests divided by the number of tests performed and resulted. Resulted tests are assigned to a timeframe based on this hierarchy of test-related dates: 1. test date; 2. result date; 3. specimen received date; 4. specimen collection date. Resulted tests are assigned to a county based on a hierarchy of test-related locations: 1. patient residency; 2. provider facility location; 3. ordering facility location; 4. performing organization location. States may calculate test positivity other using other methods. Last week data are from 9/10 to 9/16; previous week data are from 9/3 to 9/9; the week one month before data are from 8/13 to 8/19. HHS Protect data is recent as of 11:37 EDT on 09/20/2020. Testing data are inclusive of everything received and processed by the CELR system as of 19:00 EDT on 09/19/2020.
- Mobility:** Descartes Labs. These data depict the median distance moved across a collection of mobile devices to estimate the level of human mobility within a locality. The 100% represents the baseline mobility level prior to the pandemic; lower percent mobility indicates less population movement. Data is anonymized and provided at the locality level. Data is recent as of 13:00 EDT on 09/20/2020 and is through 9/18/2020.
- Hospitalizations:** Unified hospitalization dataset in HHS Protect. This figure may differ from state data due to differences in hospital lists and reporting between federal and state systems. These data exclude psychiatric, rehabilitation, and religious non-medical hospitals. In addition, hospitals explicitly identified by states/regions as those from which we should not expect reports were excluded from the percent reporting figure. The data presented represents raw data provided; we are working diligently with state liaisons to improve reporting consistency. Data is recent as of 17:01 EDT on 09/20/2020.
- Skilled Nursing Facilities:** National Healthcare Safety Network (NHSN). Data report resident and staff cases independently. Quality checks are performed on data submitted to the NHSN. Data that fail these quality checks or appear inconsistent with surveillance protocols may be excluded from analyses. Data presented in this report are more recent than data publicly posted by CMS. Last week is 9/7-9/13, previous week is 8/31-9/6.
- County and Metro Area Color Categorizations**
 - Red Zone:** Those core-based statistical areas (CBSAs) and counties that during the last week reported both new cases at or above 101 per 100,000 population, and a lab test positivity result at or above 10.1%.
 - Orange Zone:** Those CBSAs and counties that during the last week reported both new cases between 51–100 per 100,000 population, and a lab test positivity result between 8.0–10.0%, or one of those two conditions and one condition qualifying as being in the “Red Zone.”
 - Yellow Zone:** Those CBSAs and counties that during the last week reported both new cases between 10–50 per 100,000 population, and a lab test positivity result between 5.0–7.9%, or one of those two conditions and one condition qualifying as being in the “Orange Zone” or “Red Zone.”